



### 14 Oyster Point Road Banora Point NSW

4 🏠 2 🚿 3 🚗

This meticulously renovated 4-bedroom, 2.5-bathroom home, situated on a sprawling 1031m<sup>2</sup> block, boasts unparalleled structural integrity and ocean views. Beyond its charming white picket fence, discover a light-filled haven designed to cater to the modern family's every need.

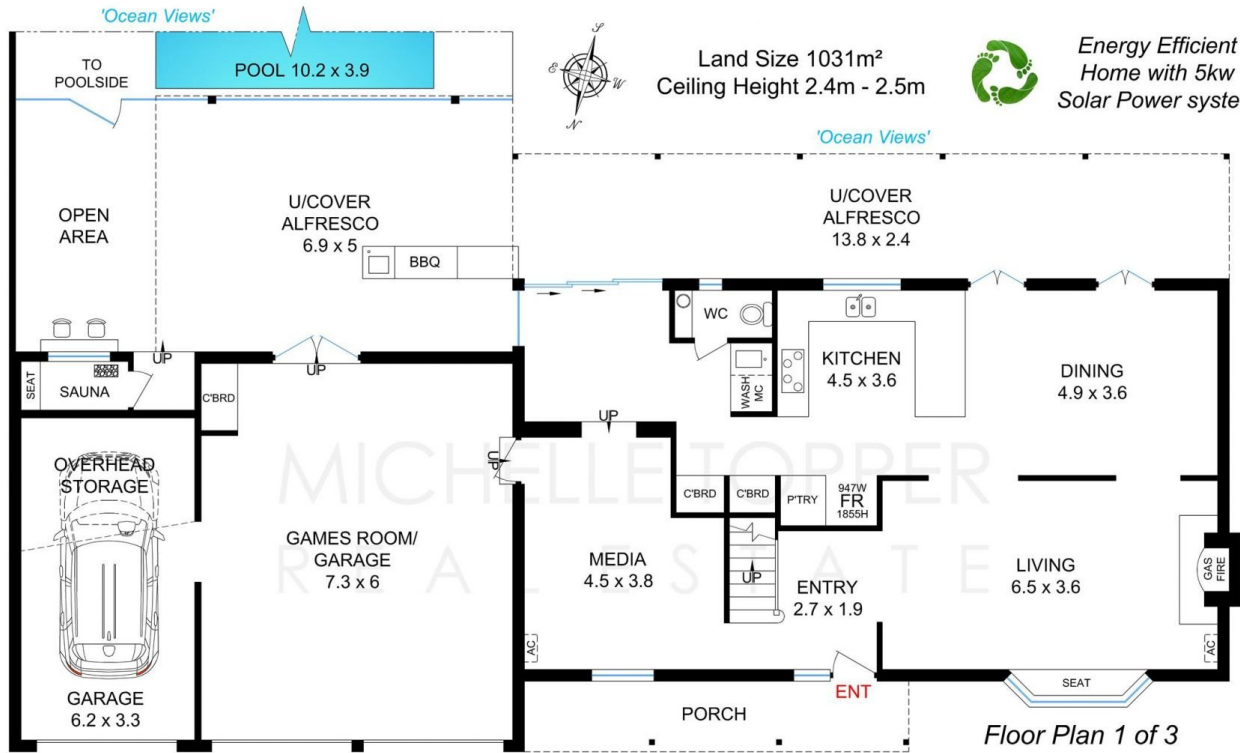
As you step onto the property, you're greeted by the serene beauty of Jacaranda trees gracing the expansive front and rear yard. Inside, warmth and character to the stylishly updated interior, adorned with plantation shutters, stylish tiles and modern down lighting. The spacious lounge, complete with a bay window and a gas fireplace, offers a cozy retreat, while the separate dining room, provides ample space for entertaining with French doors opening to the enchanting rear yard.

[For full version visit the website](https://www.topperrealestate.com.au)

**Type** : House  
**Price** : \$ 1,900,000  
**Land Size** : 1031 sqm  
**View** : <https://www.topperrealestate.com.au/sale/nsw/northern-rivers/banora-point/residential/house/7951608>



**Michelle Topper**  
0400362639



GROUND FLOOR

Floor Plan 1 of 3

Internal Gr Floor Area 168.7m<sup>2</sup>  
 Internal Upper Level 97.2m<sup>2</sup>  
 Workshop/Shed 37.4m<sup>2</sup>  
 Combined Int'l 303.3m<sup>2</sup> or 32.6sqgs  
 Pool Area 118.1m<sup>2</sup>  
 Porch/Patio/Alfresco Areas 136.6m<sup>2</sup>  
 Total Floor Area 558m<sup>2</sup> or 60sqgs

14 OYSTER ROAD,  
 BANORA POINT 2486



**Gold Coast Floor Plans**

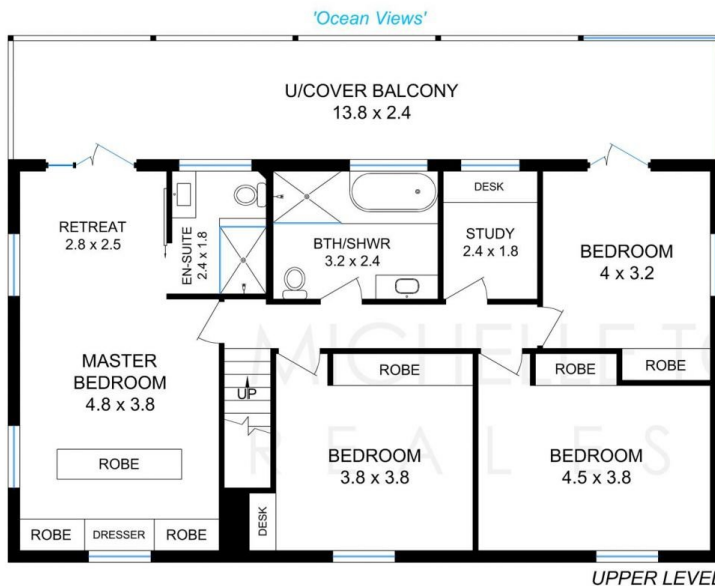
0435 252505 Scale in Meters, Dimensions are accurate. Whilst every care has been made we cannot guarantee its 100% accuracy and interested persons should rely on their own enquiries



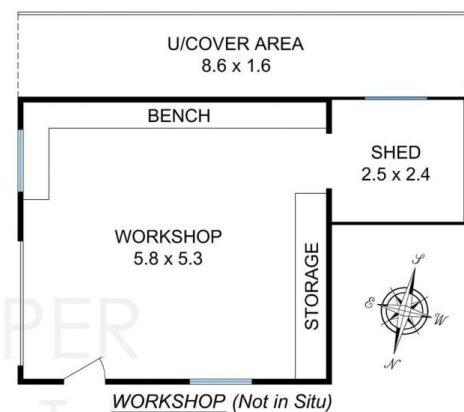
Land Size 1031m<sup>2</sup>  
 Ceiling Height 2.4m - 2.5m



Energy Efficient Home with 5kw Solar Power system



UPPER LEVEL



WORKSHOP (Not in Situ)

Floor Plan 2 of 3

Internal Gr Floor Area 168.7m<sup>2</sup>  
 Internal Upper Level 97.2m<sup>2</sup>  
 Workshop/Shed 37.4m<sup>2</sup>  
 Combined Int'l 303.3m<sup>2</sup> or 32.6sqgs  
 Pool Area 118.1m<sup>2</sup>  
 Porch/Patio/Alfresco Areas 136.6m<sup>2</sup>  
 Total Floor Area 558m<sup>2</sup> or 60sqgs

14 OYSTER ROAD,  
 BANORA POINT 2486



**Gold Coast Floor Plans**

0435 252505 Scale in Meters, Dimensions are accurate. Whilst every care has been made we cannot guarantee its 100% accuracy and interested persons should rely on their own enquiries

