



11 The Bowsprit Tweed Heads NSW

4  2  2 

Waterfront living has never looked this good from this North Facing 20M wide waterfront property with a private sandy beach, direct water access, 809m2 land, , cool northerly breezes, and an incredible location within a quiet cul-de-sac. This is your chance to enjoy the life of leisure you deserve. Spend your days exploring the canals and the Tweed River of this prestigious location before returning to the style and comfort of this must-see waterfront property.

Built approx.1984 and set on a large 809sqm cul-de-sac block, this north-facing with a 20m wide waterfrontage residence has been lovingly maintained and is now ready for you to add your own touches. The layout has been designed to make the most of the glistening water views

[For full version visit the website](https://www.topperrealestate.com.au)

Type : House
Price : \$ 1,725,000
Land Size : 809 sqm
View : <https://www.topperrealestate.com.au/sale/nsw/northern-rivers/tweed-heads/residential/house/6952642>



Michelle Topper
0400362639

11 The Bowsprit, Tweed Heads

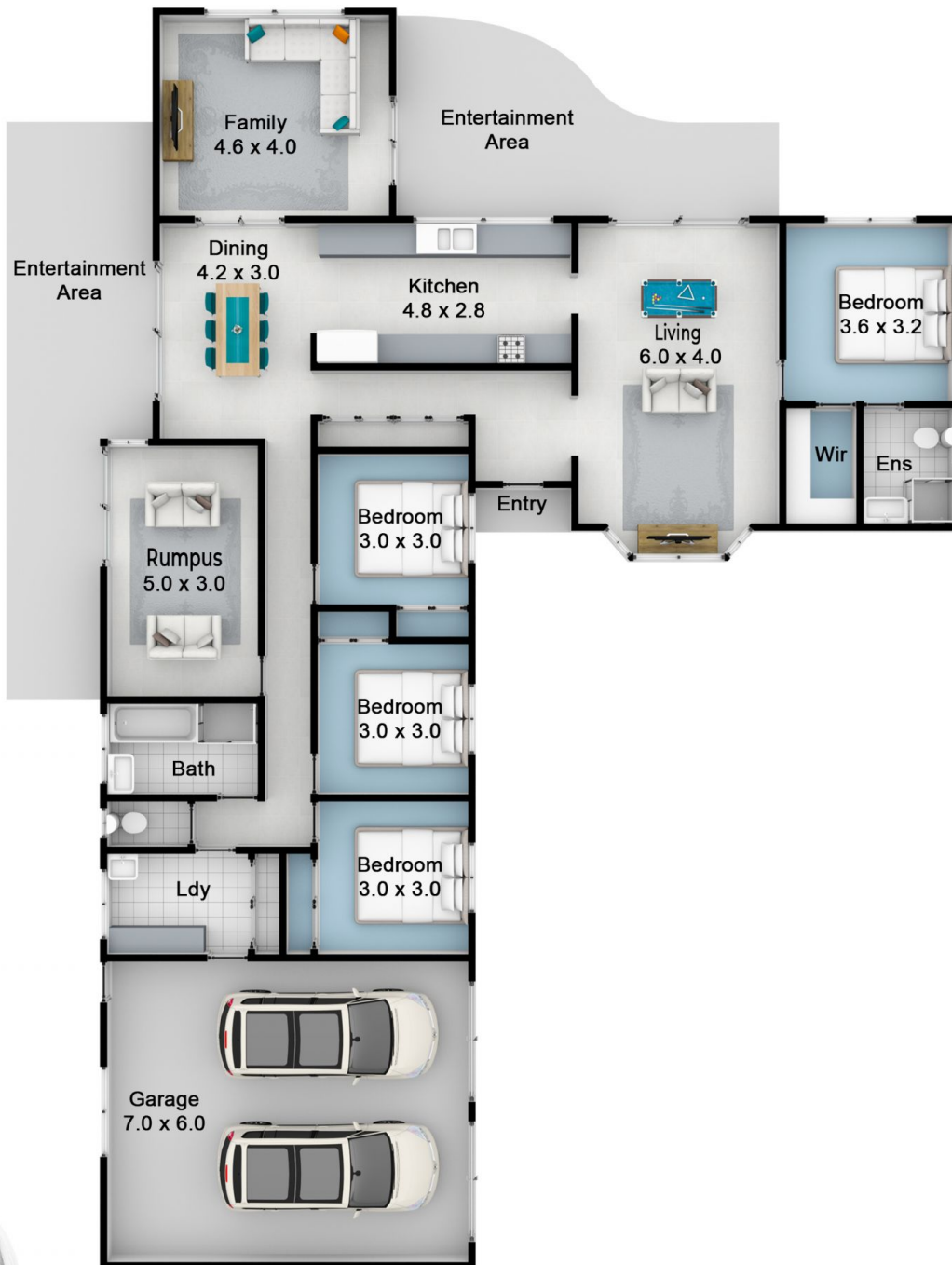
Please note:

Floorplan measurements are a guide only.

All dimensions are approximate in their distance and volume.

Internal : 210.3m² - External : 53.1m² - Total : 263.4m²

Rear



-  4
-  2
-  2



Michelle Topper
0400 362 639
michelle@topperrealestate.com.au

Front