






### 7 Bambaroo Crescent Tweed Heads NSW

4  2  2 

The owners have created a private sanctuary with a resort style north / easterly facing inground swimming pool, an open plan living area with bifold doors opening to the Bali Hut, to the design of the home that flows to the tranquil backyard offering an outside bath and a vegetable garden.

#### Features Include:

The lounge room is inviting, with timber bi-fold doors opening to the entertainment area.

The dining area is centered around the multiple living areas.

The conventional kitchen is the hub of the home with easy access to the dining, loungeroom, family room and the entertainment area. There is plenty of bench space, a gas cooktop, an electric oven, dishwasher, and a spacious

**Type** : House  
**Price** : \$ 1,230,000  
**Land Size** : 692 sqm  
**View** : <https://www.topperrealestate.com.au/sale/nsw/northern-rivers/tweed-heads/residential/house/6830986>

[For full version visit the website](https://www.topperrealestate.com.au)

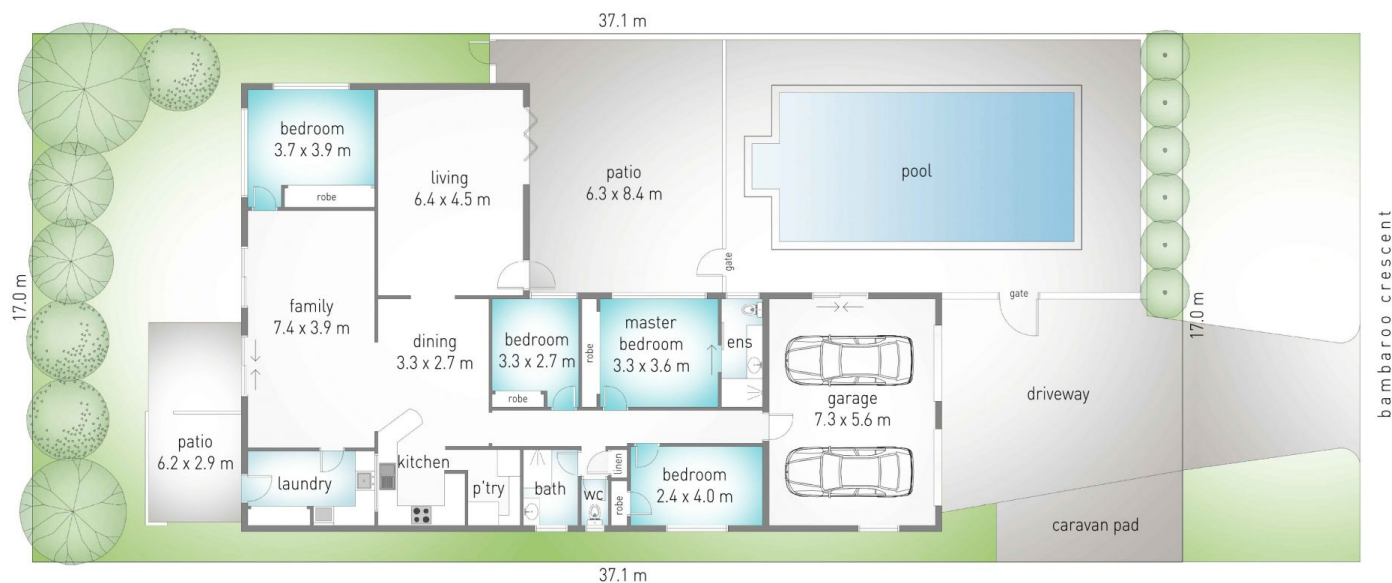


**Michelle Topper**  
0400362639

# 7 Bambaroo Crescent, Tweed Heads

4 2 2 692 m<sup>2</sup>

internal: 229 m<sup>2</sup> | external: 71 m<sup>2</sup> | total: 300 m<sup>2</sup>



Dimensions are approximate. All information contained herein is gathered from sources we believe to be reliable. However we cannot guarantee its accuracy and interested persons should rely on their own enquiries.

