






25A & 25B/973 Gold Coast Highway Palm Beach QLD

4  5  2 

Exquisite 270-degree uninterrupted views of the Pacific Ocean and prestige beaches from Coolangatta to Surfers Paradise, and the serene Hinterlands. The view will captivate you day or night from this original two-level penthouse, with its own private roof top pool and spa. Complete with 4 spacious bedrooms, and 4.1/2 bathrooms.

Type : Apartment

Price : \$ 1,925,000

View : <https://www.topperrealestate.com.au/sale/qld/gold-coast/palm-beach/residential/apartment/6830800>

Positioned on the 25th and 26th floors, and spanning over 394m² and with 18.5m wide ocean view, this elegant apartment Royal Palm is located in a premier position at one of the Southern Gold Coasts stunning beaches.

First Level Penthouse

- From the time you enter the living area you will be drawn to the views of the ocean and beyond. The sweeping

[For full version visit the website](https://www.topperrealestate.com.au)



Michelle Topper
0400362639

25A 973 Gold Coast Highway, Palm Beach

4 4.5 2

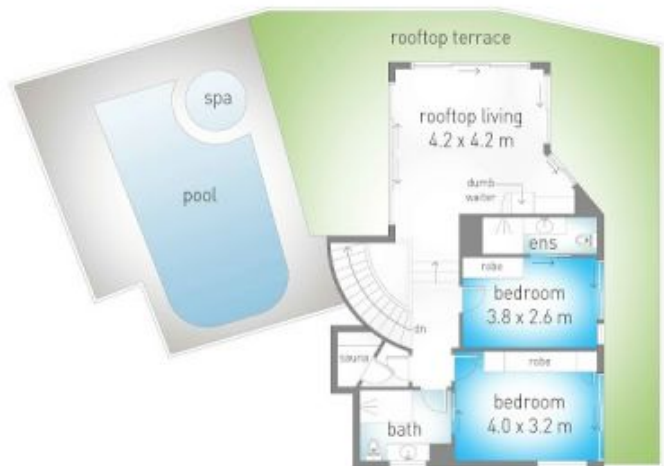
internal: 261 m² | external: 133 m² | total: 394 m²

MICHELLE TOPPER
REAL ESTATE
0400 362 639

@realty



lower level



upper level



Dimensions are approximate. All information contained herein is gathered from sources we believe to be reliable. However we cannot guarantee its accuracy and interested persons should rely on their own enquiries.